



SNOMED International Delivering SNOMED CT

# SNOMED International

Update

31<sup>st</sup>, January 2023DATE

Ian Green - Customer Relations Lead (Europe) & Global Clinical Engagement Lead

snomedexpo.org @snomedct linkedin.com/company/ihtsdo/

1



## SNOMED International

Owned and governed by 47 Member countries, SNOMED International is a not-for-profit organization charged with setting global standards for health terminology

Headquarters in London

Virtual organization & global workforce

Membership dues based on National wealth.

SNOMED International: Delivering SNOMED CT

2

### Vision

By 2025 clinical terminologies will be used globally, which will result in better health and patient outcomes, supported by one language of health.



SNOMED International: Delivering SNOMED CT

3

### OUR 2020-2025 STRATEGY

#### Product and Services Goals

Our Product and Services Goals speak to those priorities that best serve improvements in patient outcomes through the evolution of SNOMED CT as a product as well as supporting interoperability through collaboration and ways of working with other health information standards. The further understanding and quantification of the value offered by SNOMED CT is also a key strategic imperative.

##### SNOMED CT VALUE PROPOSITION

Extend the SNOMED CT value proposition to highlight improvements in patient outcomes and determine and validate all stakeholder benefits including integrating remuneration, research, public health information flows and semantic interoperability into the value proposition of SNOMED CT.

##### SNOMED CT EVOLUTION

Evolve SNOMED CT to bring improvements in patient outcomes and meet the needs of the integrated health and social care systems in a sustainable fashion.

##### TERMINOLOGY INTEGRATOR

SNOMED CT will continue to be a hub that supports, facilitates and integrates terminology standards and classifications to help enhance and streamline the health and care ecosystem.

SNOMED INTERNATIONAL 2020-2025 STRATEGY

#### Adoption Goals

The organization's Adoption Goals focus on the mechanisms, tools, and resources needed to increase adoption and consumption of SNOMED CT among clinicians and additional valued stakeholders.

##### SNOMED CT ADOPTION & CONSUMPTION

Increase adoption and consumption of SNOMED CT for Members, suppliers, researchers and other SNOMED CT users by ensuring it is pragmatic, effective and verifiable.

##### SNOMED CT IMPLEMENTATION SUPPORT

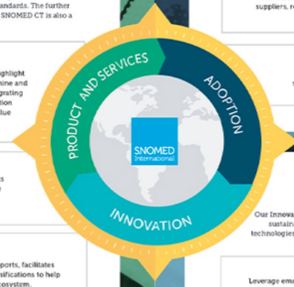
Provide sustainable and approachable products and services to support the implementation of SNOMED CT.

#### Innovation Goal

Our Innovation Goal, regarded as a critical element of future growth and sustainability, targets the organization's efforts to leverage emerging technologies and business practices to deliver value and drive efficiencies in the provision of patient care across all stakeholder groups.

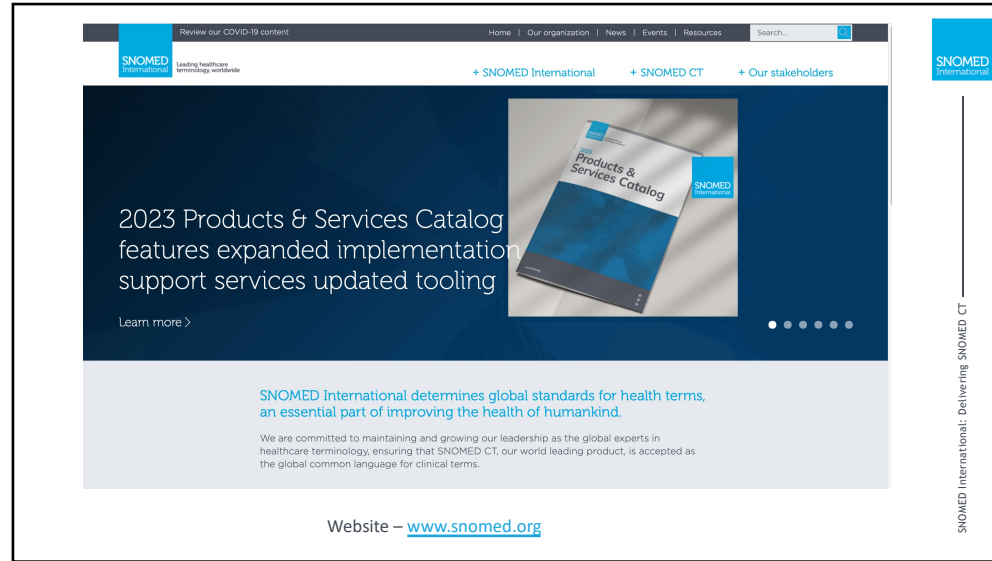
##### EMERGING TECHNOLOGIES

Leverage emerging technologies (e.g. Artificial Intelligence) to deliver value for stakeholders and drive efficiencies both at the point of care, across the organisation and the evolution of the product.

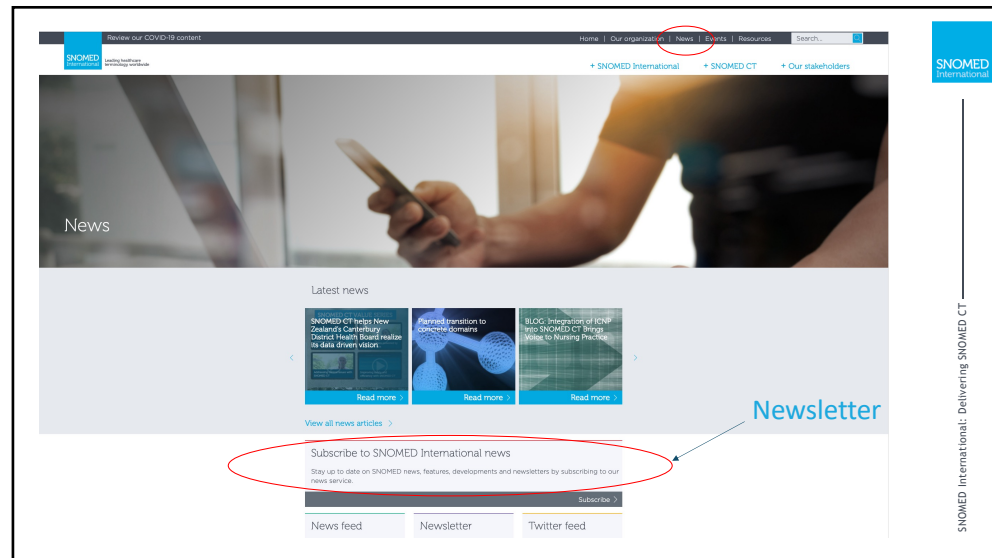


SNOMED International: Delivering SNOMED CT

4



5



6

Confluence

Spaces ▾ People Questions Discussion Calendars Analytics Cockpit Create

Search

Space Directory Create Space

Space	Description	Categories	Filter
Site Spaces			
Personal Spaces			
My Spaces			
Archived Spaces			
Categories			
Advisory groups			
Archived			
Clinical-reference-groups			
Collaboration			
Diabetes			
Discussion-collaborate-use			
Document-publish			
Document-work-in-progress			
Documentation			
Documents			
Expo			
Financial			
General			
...			

<https://confluence.ihtsdotools.org/spacedirectory>

- Confluence is an open platform, which allows you to view content
- Where there are groups that allow discussion, you will require a Confluence account to participate

SNOMED International: Delivering SNOMED CT

7

Obtaining a Confluence account if required

Confluence User Accounts

Most SNOMED International Confluence users do not need accounts. In contrast to SNOMED International's previous collaborative space ("Collabnet" or "TeamForge"), Confluence allows non-registered users to browse topics, delving into project spaces, without logging in.

**So why would you need an account?**

Those who might need Confluence accounts include members of SNOMED International groups (such as Advisory Groups or Virtual Clinical Groups) and those representatives of Member country NRCs who need access to the Content Request Service.

Confluence account application forms will be reviewed by an administrator to determine whether an account is necessary for the stated purposes.

**Requesting Access to SNOMED International Tools**

Please also use this form to request access to the tools with the options provided. Tools that are not on the list are not available to external users.

Please note that the use of the International Content Request Service (CRS) is for an **authorized user who is usually a named individual from an NRC**, a user from a Member country who does not have access to an NRC, or an individual from an international group who has been identified as providing specialist content.

If you would like CRS access, please explain why you qualify in the "Comments or questions" box in the form.

**SNOMED International Account Application Form**

We will only use your data to administer your account and to provide you with the products and services you have requested from us. We will never pass on your information to any external agencies or organisations without your explicit permission.

Please note that due to the way SNOMED International systems operate, the removal of your personal data will result in the removal of your account from that service and you will no longer be able to log on or use those services.

If you wish to stop receiving communications from us from Confluence, you will be able to use the [unsubscribe link](#) in our email footer. You have the right to change your consent preferences at anytime by emailing [gs@snomed.org](mailto:gs@snomed.org)

[Sign in to Google](#) to save your progress. [Learn more](#)

**\*Required**

Your given name(s) \*

Your answer

<https://confluence.ihtsdotools.org/display/ILS/Confluence+User+Accounts>

SNOMED International: Delivering SNOMED CT

8

## Clinical Engagement

<https://confluence.ihtsdotools.org/display/CP/Clinical+Engagement>

**WEBLINK** - [www.snomed.org/clinical](http://www.snomed.org/clinical)

This is the home page for all Clinical Engagement activities within Confluence. The site directs you to all resources you will need as a clinician to participate in the development of SNOMED CT, and also provides access to clinically focused educational materials.

**Clinical Engagement Chat Room**

The Clinical Engagement Chat Room aims to provide a simple way to engage with other clinicians on issues and to ask/answer queries.

The URL for the chat room is <https://public-snomed.slack.com/messages/CSFLMBV18/>

**Getting Started**

Access to the SNOMED International Slack workspace is by invitation only. Experience on other platforms has shown that it is easier to manage who has access this way. If you do not have an account or access to the SNOMED International public workspace, please [contact.org@snomed.org](mailto:contact.org@snomed.org) to request an account.

**About Us**

Clinical input into the development of SNOMED CT ensures that the terminology meets current and future clinical requirements. These activities form part of the broader approach of Clinical Engagement. Clinical engagement is currently supported by a dedicated team.

The team looks to support clinical engagement activities across all regions through discussion and collaboration with local-based clinical colleagues, and discussions with national release centres (NRCs).

**Resources**

The links below provide access to various resources which support the provision of clinical input into the development and maintenance of SNOMED CT. Please <CLICK> on the appropriate button to access the resources you require.

**Team:**

- Ian Green**: Customer Relations Lead Europe & Clinical Engagement Business Manager. Email: [ig@snomed.org](mailto:ig@snomed.org)
- Dr Charles Outteridge**: Clinical Engagement Lead EMEA. Email: [ego@snomed.org](mailto:ego@snomed.org)
- Jane Millar**: Collaboration Lead CBE Coordinator. Email: [jm@snomed.org](mailto:jm@snomed.org)

9

## Clinical group Directory

<https://confluence.ihtsdotools.org/display/CP/Directory+-+Clinical+Groups>

- All clinical groups are open to all participants
- Regular meetings
- Anyone can attend the Zoom meetings
- Will require a Confluence account to participate in discussions

**ABC**: Allergic Hypersensitivity and Immunity

**DEF**: Dermatology

**GHI**: Oncology and Precision Medicine

**JKL**: Eye Care

**MNO**: Mental and Behavioural Health

**PQR**: Pathology and Laboratory Medicine

**STU**: Nursing

**VWXYZ**: Nutrition Care Process Terminology Clinical Project Group

**Active Project Groups**

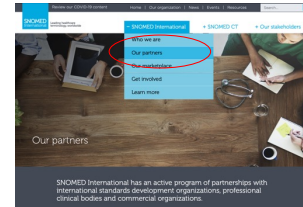
- Cancer Synoptic Reporting Project Group

10

## Collaborative partners (update)



- **Regenstrief Institute (LOINC)**
  - Coordinated use of SNOMED CT and LOINC
  - Enhance laboratory content in SNOMED CT
- **International Diet Dysphagia Standardization Initiative (IDDSI)**
  - Incorporation of IDDSI Framework v2.0 into SNOMED CT
- **International league Against Epilepsy (ILAE)**
  - Updating content in SNOMED CT to align with the ILAE classification of Epilepsy
  - Provision of mapping between SNOMED CT and ILAE classification
- **International Council of Nursing (ICN)**
  - ICNP classification now published in SNOMED CT format
  - Editorial control of content by ICN
- **American Joint Committee on Cancer (AJCC)**
  - Updating cancer staging content in SNOMED CT to latest version of AJCC cancer reports

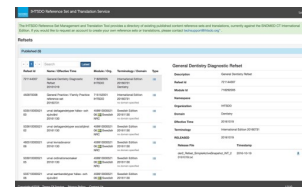
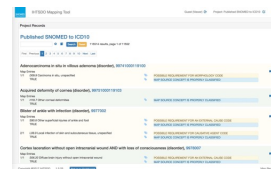
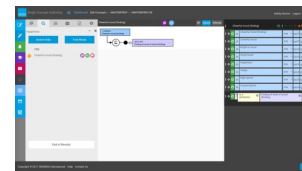
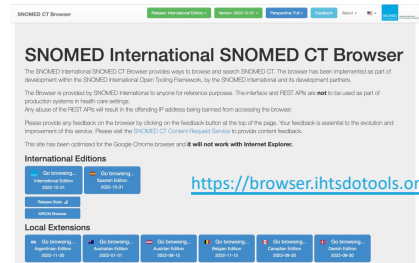


More details on our website  
<https://www.snomed.org/snomed-international/our-partners>

SNOMED International: Delivering SNOMED CT

11

## SNOMED International Tooling



SNOMED International: Delivering SNOMED CT

12




## EU policy

- Long history of discussions between SNOMED and the European Commission
- European Commission have representation on SNOMED International General Assembly (non-voting)
- EU Commission support for EU Member countries to adopt SNOMED CT
  - 60% reimbursement of SNOMED International membership fees
  - Agreed funding in place to 2027
- Covers funding for existing, and non-SNOMED, International member countries
- Increasingly SNOMED CT is being included in EU specifications

SNOMED International: Delivering SNOMED CT

13



## Key EU projects

Some examples:

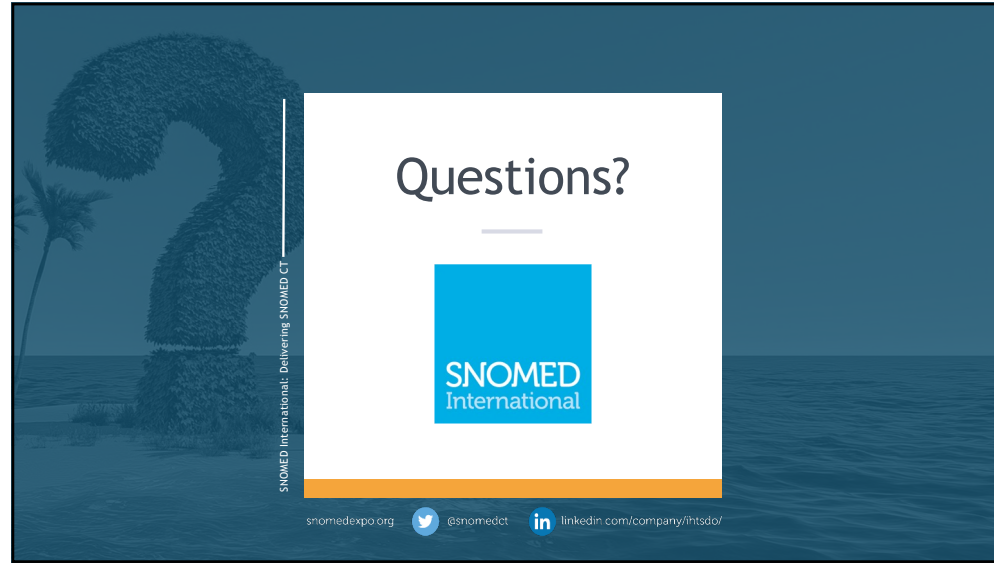
- eHealth Network
- X-eHealth
- EHDS
- TEHDAS
- ReCoDiD
- UNICOM

Numerous other projects which could impact SNOMED Member countries

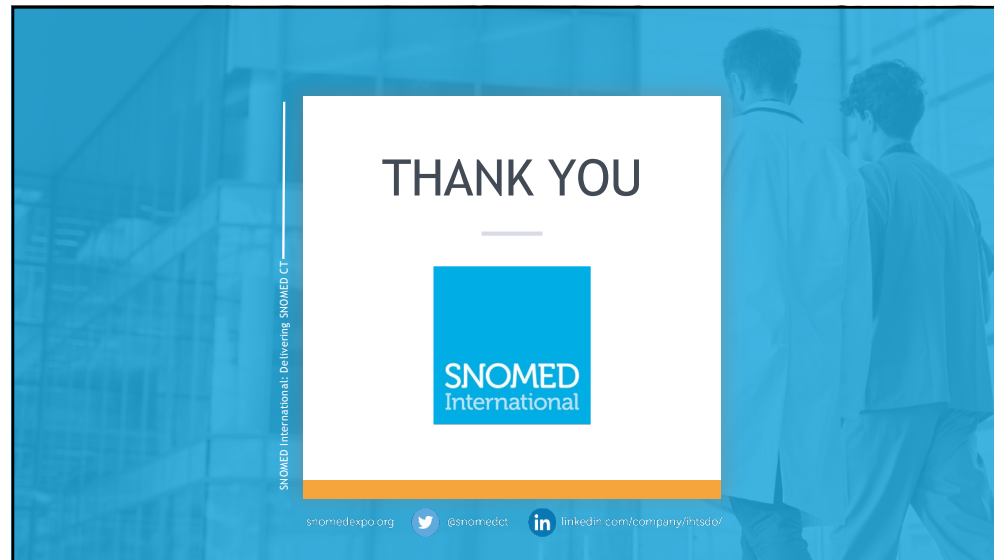
- Leverage member involvement
  - ✓ Member Forum EU Group
  - ✓ Encourage sharing of information/experience/work between EU Members

SNOMED International: Delivering SNOMED CT

14



15



16