

The tragic event in Creeslough, Donegal sent shock waves nationally and around the world. The news is overwhelming and the loss of life together with the many injured is difficult to comprehend. Our thoughts are with the people of Creeslough and our HSE colleagues who assisted with the emergency operation over the last few days.

New eHealth Offices in Drogheda



By Thomas McKenna
Executive Support

The large increase in eHealth staff numbers over the last two years has placed more and more pressure on what was an already crowded office space portfolio. Since 2021 we have worked with the property team in Estates to actively seek new office accommodation nationally, to satisfy our growing departmental population. There have been some good success stories already, but we are delighted to bring the newest

and largest of these properties to your attention. The offices in Southgate, Drogheda, represent a significant increase in eHealth's presence in the Northeast of the country and will have a catchment area which will include North County Dublin, the Western parts of Meath, as well as Louth, Cavan and Monaghan. Overall, there are approximately one hundred and twenty workstations, set out as open plan and one and two persons' offices, along with large meeting rooms and break out rooms.

Continued on next page...

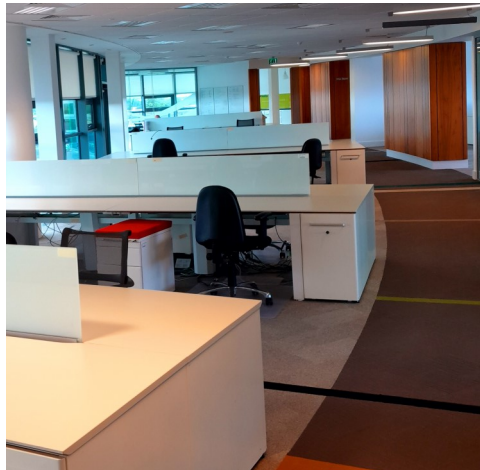


Inside this issue

New eHealth Office Space	1-2
IIS Ukraine Response	3
HealthIRL Matters	4-5
The Laboratory Programme	6
Mind Your Head	7
Acute Delivery Team - On Tour	8
eHealth Careers	8
eHealth Team Focus Sap CoE: Business Support Team	9-10
eHealth YouTube	11
Pets Corner	11
Events.....	12
Meet our new Colleagues	13-18

The accommodation is fully furnished to a really high standard, it is now fully connected to the NHN and we have added some AV equipment which was repurposed from its use in Citywest last year.

The process for acquiring a lease on new property is arduous and complicated. In IT we all work in an environment which moves at a, sometimes, frenetic pace. The world of property management and acquisition, however, moves rather slower, especially when the legal teams sit down to dissect lease agreements. To get a property like this over the line has taken a massive effort from multiple eHealth and HSE sections. It is a testament to all involved to get this project to where staff can now work from.



Some more good news is that there are a number of active accommodation projects, right across the country, which will be brought on stream for eHealth staff in the coming months. I will bring you updates and pictures as I have them.

Photographs supplied by
Conor Pentony, Executive Support Team.

IIS Ukraine Response

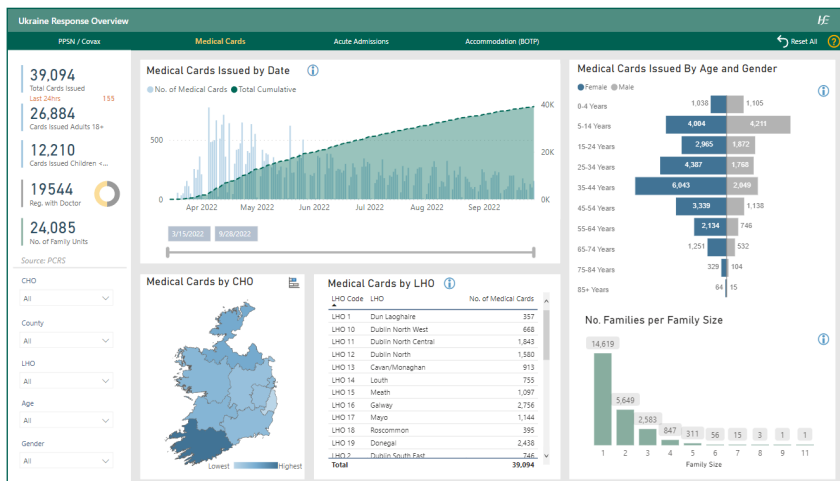
By Annmarie Caffrey
Integrated Information Services

Introduction

The invasion of Ukraine by Russia earlier this year, resulted in the mass displacement of Ukrainians across Europe and further afield. To date, Ireland has taken in more than 40K people fleeing war. The task of providing suitable healthcare as well as housing and education has been enormous. To enable this, timely access to key information is essential.

HSE Response

Within the HSE, a high level co-ordination group was rapidly formed. It comprised 9 sub-groups, focusing on areas such as Mental Health, Disability, Community and so on. IIS worked under the Sub-group of 'Data and Analytics' led by Maria McCann. Our role was to provide situational awareness to HSE decision



makers which allowed them to coordinate the Health Response to this situation.

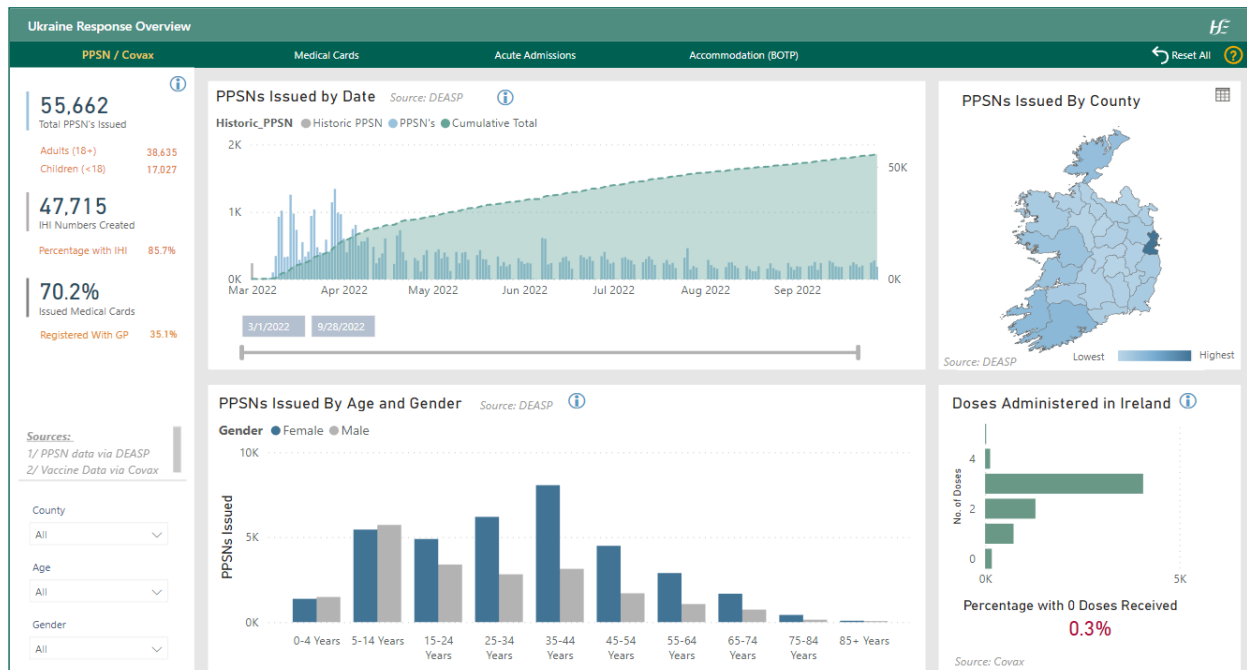
What data is being captured?

The vast majority of all Ukrainians coming to Ireland have their details processed through CityWest Transit Center. The IIS Team rapidly put the data systems in place to gather the necessary data to provide essential health services to displaced persons. This data flows into the IIS datalake, which is our modern cloud based data store, from sources including: Department of Social Protection; Department of Children; Patient Care

Reimbursement Scheme (PCRS); Acute Hospitals; COVAX System; and the online MS Health Assessment, conducted at CW.

Benefits

IIS team's storage, processing and visualisation of this wide range of data provides valuable insights which help build an ongoing picture of Ireland's humanitarian response. As well as enabling the HSE and government agencies create the supports required in a timely way, and to predict likely future trends and plan accordingly.



HealthIRL Matters—Let's Get Going!

By Deirdre O'Regan
ICT Programme Manager
Technology Office

The HealthIRL Migration programme (previously known as the ONE programme) was re-established in late 2021, under the governance of the Technology Office.

What is it?

The purpose of the HealthIRL Migration Programme is to migrate all users, devices and mailboxes from the regional based domains to a central shared domain (database), called HealthIRL. This gives the HSE a single central view of the 8 legacy regional domains, which were aligned with the old Health Board regions.

HealthIRL is a critical enabler in terms of ability to use cloud systems. From an organisational point of view, the HealthIRL programme offers key benefits in terms of best practice identity management, resiliency, security and is a key recommendation of the PWC report, following the HSE cyber-attack.

The HealthIRL domain is the largest database of users in the organisation and represents HSE staff (partners/vendors) from every division of the HSE.

Did you know, once on HealthIRL, users can avail of an enhanced communication and collaboration platform, in the form of Microsoft Teams, Planner & Exchange Online.

As the programme is re-establishing, we would like to target users for migration in an efficient, effective method, while ensuring business communications are not interrupted and the migrations are delivered in a business-logical manner. In order to do

this, we have established a number of workstreams, such as Acute Hospitals Self-Managed and Building by Building approach with the CHOs. A pilot site was chosen for each workstream, University Hospital Galway and CHO3 respectively. This is not easy - we need to be in this together.

Business collaboration is key to delivering HealthIRL in a planned, coordinated, high-quality fashion across the organisation.

This is unpicking 30 years of legacy across regional areas, it is not easy for anyone. It is technically challenging and may reveal issues which are unique to your area as we move across the country. We will commit to addressing these issues promptly and supporting you and your teams through the migration. What we need from you and your teams is to give the migration priority as the key enabler it is.

Acute Pilot Site

The Acute Self-Managed workstream involves the HealthIRL programme supplying dedicated HealthIRL migration engineers to the hospital IT lead. The ICT team then manage the planning, schedule and comms to deliver HealthIRL migrations locally to their users. HealthIRL programme will assist and support with pre-migration user checks and post-migration support issues. This model is strongly favoured for Acute Hospitals, as local ICT know their users, applications, infrastructure and site far more intimately than a national programme can.

As the pilot site, UHG have been delivering HealthIRL migrations to their users for a number of months, through the Acute Hospitals Self-Managed workstream. UHG ICT, HealthIRL Migration team and Technology Office have worked closely to support the



migrations in UHG. As the pilot site, there were several issues identified at the beginning of the process, which, as per our commitment above, have been worked through to resolution. Over 100 acute users in UHG have been migrated to date and the team in UHG plan to ramp up migrations in the coming weeks. There are a number of other hospitals planning to adopt this self-service model in 2022, including Wexford General Hospital, University Hospital Kerry, University Hospital Group Limerick and Tipperary University Hospital. Other hospitals are in the early engagement phase and preparing to line up to begin HealthIRL Migrations in 2022 or 2023.

Leveraging this local expertise has proven invaluable and allowed for a smoother deployment in the Acute Hospitals.

CHO Building by Building Pilot Site:

The CHO building by building approach involves working closely with the relevant CHO Digital and ICT team. The CHO Digital and ICT team supply user lists and prioritise users and buildings for migrations, based on local business requirements and logical business units.

Continued on next page...

The HealthIRL team then use the user lists to do the necessary pre-migration user checks, communicate with and schedule the users and engineers for migration, perform the migration and carry out post-migration checks with the user to ensure the migration has succeeded as expected.

The CHO Digital & ICT team have been a key local point of contact, for the HealthIRL migration programme and for the end user.

As the pilot site, CHO3 Digital and ICT team have been working closely with the HealthIRL Migration team to help plan, schedule and manage migrations in their area. These team have been instrumental in this area, providing the HealthIRL team with user listings, communicating with the users and being the key liaison point between the HealthIRL programme and the CHO3 users for migration. We are also engaged in migrations with the other CHO Digital and ICT teams, and hope to expand in all CHO areas in the near future. The HealthIRL programme is a programme of collaboration, requiring close partnership working across many

areas of the organisation. We have established close working relationships with many of the Digital and ICT CHO Leads, Hospital ICT and Senior Management teams, eHealth Directors and other eHealth Departments, such as National Service Desk, Regional Operations, Device Refresh Programme, Office365 and Tech Office. But most importantly it needs YOU – all of us in the HSE have a responsibility to commit to and support HealthIRL – it is the future of our digital strategy.

Liaising with the ICT & Management expertise locally in the region has proven invaluable to delivering HealthIRL migrations in an efficient, effective way, with a high-quality user experience.

Contact us:

The HealthIRL Migration programme can be contacted on -

healthirl.migration@hse.ie

We welcome all communications from sites in relation to joining any of our active workstreams for HealthIRL Migration.

HealthIRL Migration User Benefits

Once on HealthIRL, users will be able to:

- Avail of the enhanced communications and collaboration platform, which includes Microsoft Teams, Microsoft Planner, Sharepoint and Office 365.
- Avail of a single mail platform, with the ability to apply for Exchange Online.
- Locate any HSE staff member in one single email directory.
- Share calendars with national colleagues across all locations.
- Login from any location, on any HSE device.
- Relocate between HSE regions, whilst keeping the same identity.
- Access national applications and shared folders from any location.
- Reset expired/forgotten passwords at any time with Self-Service.
- Access to cloud-based systems as appropriate.
- A more connected and standardized user experience.

**WE ARE
HIRING**

JOIN WITH OUR TEAM

There are a number of vacancies currently on the eHealth Ireland website. Click the button below for information on these positions.

The following positions are due to be advertised in the coming days/weeks:

For A2i-HIDs Team:

Grade VII Database Administrator
Grade VII Agile Technical Project Manager (Scrum Master)
Grade VIII Software Development Manager HIDS
Grade VII Systems Cloud Engineer
Grade VI Senior Software Tester
Grade VII Senior Software Tester
Grade VII User Interface Interaction Designer
Grade VIII Senior Database Administrator

Customer Service Support team:

Grade V Service and Support Officer
Grade VI Service and Support Manager
Grade VII Service and Support Manager
Grade V Service Transition Analyst
Grade VII ICT Problem Management Manager

eHealth & Disruptive Technologies

The Laboratory Programme

By Joanne Davis
The Laboratory Programme

The Laboratory Programme, under the governance of eHealth was established in 2021 following the cyber-attack, to advance, standardise and support key Laboratory ICT initiatives and to enhance integration of healthcare.

The aim of this Programme is to provide a framework for laboratory services to engage with HSE eHealth and Acute Operations.

The Laboratory Programme is comprised of a diverse team of experienced healthcare professionals including Medical Scientists, Clinical Scientists, Data Analysts, ICT Technical Experts, Project Managers and Project Officers.

Overall programme strategy includes:

- Aligning objectives and strategy
- Improving system resilience and streamlining processes
- Maximising and consolidating available resources
- Realising benefits of outcomes with a national perspective
- Exploring long-term benefits to the organisation
- Supporting innovations and new capabilities

Current key projects include:

- MedLIS National Laboratory Information System
- LIS and hardware stabilisation of current LIS systems
- Compliance Management System Procurement
- eOrdering for GPs
- Anti-Coagulant Monitoring System Procurement

MedLIS Update:

The MedLIS program was temporarily suspended following the cyberattack in May 2021, while the National MedLIS



Project team was re-directed to support the acute and immediate response to the attack on our healthcare systems.

The MedLIS server environment and infrastructure was also impacted by the events of May 14th, 2021, and a decision was made to rebuild and host the application remotely in Sweden, in line with Cerner's long-term strategy. This will facilitate a code upgrade to the latest supported version, alignment with a Cloud First Policy and a robust disaster recovery environment. The rebuild in Sweden will be complete by March 2023 to be followed by a 14-month project to deploy the MedLIS application at Beaumont Hospital.

Progress:

A comprehensive project plan has been agreed in conjunction with our partners at Beaumont Hospital. The 14-month project includes additional build, testing and validation with a scheduled Go-Live date of Q2 2024.

Targets:

MedLIS has experienced significant challenges and external shocks since the contract was signed with Cerner in 2015 but the vision remains the same in terms of paperless ordering and reporting, with a consolidated patient laboratory record, supported centrally by a dedicated National Support Team. The MedLIS team are happy to address any specific questions that our

healthcare colleagues have on any aspect of MedLIS or the Laboratory Programme and appreciate your continued support and engagement.

Contact Us:

Laboratory Programme Manager
Thomas Walsh
eHealth and Disruptive Technologies,
St. Patricks Hospital, Waterford,
X91N977

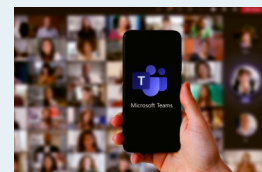
Email: thomasw.walsh@hse.ie



The Microsoft O365 Team
send regular hints and tips on how to get the most out of using MS Teams.

All this information is held on the eHealth Ireland website—

[click here for more information](#)



MIND YOUR HEAD - MENTAL WELLBEING

4 Simple Ways to Practice Mindfulness

If you are new to mindfulness you may want to start with a **relaxation breathing exercise**.

1



2

Try to **minimise distractions** as much as possible. It may help to close your eyes or use headphones.

Consistency is key!

Incorporate even one minute of mindfulness into your daily routine in order to develop a consistent habit and see the benefits.

3



4

Wait **three seconds before picking up your smartphone**. The point is to take those seconds to turn your attention to what thoughts or feelings arise as you're picking up your device.



Beaumont Mindfulness and Relaxation Centre



It's that time of year again, leaves are falling, days are getting shorter, and our winter coats are being dragged out from the back of the wardrobe. As the winter creeps in, many of us experience episodes of low mood, or the winter blues. This segment will explore simple ways that we can support our mental health in the darker months, with practical tips and useful resources.

This month's topic is mindfulness. Mindfulness is the practice of paying attention to whatever is happening in the present moment and experiencing it without judgement.

This practice helps you to focus on the present and what's happening in the moment, and to weaken old and unhelpful thinking habits. Mindfulness is not about trying to relax, but more about learning how to accept things as they are.

How do you practice mindfulness? Psychology services in Beaumont Hospital have developed their own mindfulness exercises, which are accompanied by a wealth of information about the psychology and benefits of the practice. If you are interested in learning how you can incorporate this into your day, check out the Beaumont Hospital website at:

<http://www.beaumont.ie/marc>.





BOOK CLUB

The **BOoCIO Virtual Club** will meet TODAY:

Tuesday 11th October, 2022
at 1pm via MS Teams

If you are interested in joining, new members are always welcome and you can email us on:

communications.ehealth@hse.ie



Acute Delivery Team On Tour!



The Acute Delivery Team held its Programme Update Sessions in Sligo on the 7th and 8th of September. These popular sessions are designed to update stakeholders across SMT, eHealth Directors, and the wider IT community on the status of current projects and programmes and our plans for the year ahead. It was a great opportunity to meet with the eHealth community and update them on the latest projects joining our growing portfolio. The busy 2-day schedule also included an Acute Delivery Team Meeting on Thursday afternoon.

Always up for a challenge, a few of the team decided to enjoy some of the great outdoors Sligo is well known for and took a hike up Knocknarea mountain after Wednesday evenings session, ably led by local tour guide, Martina Burns!

Photographed above left to right:

Noel Carberry, Brian Dunne, Keith Morrissey, Martina Burns, Caroline Cahill, John Gilmartin, Caroline Ryder, Mairéad McKenna, Catherine Jinks, Cathal Collier and Thomas Walsh.

eHealth Management Development Programme



Some of our eHealth colleagues recently completed the two day eHealth Management Development Programme held in the Richmond Education and Event Centre.

The participants on the day were from Left to Right:

Sean Toner, Niamh Falconer, Michael Cremin, Mary Murphy, Janis Nolan, Brian Lynch, John Bruton, Lorraine McKenna, Nicola Butler, Aoife Maher, David Woods, Frances Griffin, Stephanie Cremen and Patrick Mulligan.

eHealth & Disruptive Technologies Team Focus

SAP Centre of Excellence—Business Support Team

Following on from our last Newsletter published in July, where we focused on the SAP CoE Quality Assurance Team, this month's article will focus on the SAP CoE Business Support Team. Introductions to each of the other SAP CoE teams will follow in upcoming editions of the eHealth newsletter.

SAP Centre of Excellence – Business Support Team

The SAP CoE currently consists of seven functional teams; Technology & Infrastructure, New Developments, Business Support, Business Intelligence Unit, Quality Assurance, Business Delivery Team for Finance & Procurement and Transformation & Continuous Improvement.

The Business Support team is led by Caroline Hurley:



The SAP CoE Business Support team provide 1st level SAP HR & Payroll System Support to all system users across HSE and wider Health Sector via the SAP CoE Helpdesk team. In addition to this, Business Analysts who are subject matter experts within each SAP HR & Payroll module provide higher second level support for the SAP HR & Payroll Helpdesk and SAP HR & Payroll user base. Currently this support is provided by virtual teams via the SAP CoE Weblog.

Business Support has responsibility for ensuring all HR & Payroll module change requests arising from Help Desk Calls, Circulars and Legislative changes are configured, tested and managed in compliance with the SAP CoE Change Control strategy.

The Business Support function also manages the implementation of HR master data change, break/bug fixes and in addition, is responsible for performing functional testing of the SAP HR & Payroll System.

The SAP CoE Business Support team consists of four areas:

- Payroll, FICO and Compensation Management
- Personnel Administration, Organisational Management and Training & Events
- Time Management
- Help Desk

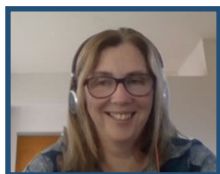
The Business Support team members collaborate with our colleagues across the SAP CoE and with our colleagues in the wider eHealth family on a regular basis. This constructive collaboration allows the Business Support team to contribute positively to the goals and targets of the SAP CoE.

Payroll Team Lead – Vacant (recruitment campaign in progress)

The Payroll team is responsible for

- Providing second level support re payroll, FICO, Travel and Compensation Management.
- Providing subject matter expertise to both the business users and corporate entities and also analyse and resolve user issues as assigned by the Helpdesk delivering a quality service to the SAP HR/Payroll user base.
- Implementing pay awards, HR and DOH circulars relating to payroll, travel and compensation management.

Personnel Administration/Organisation Management (PA/OM)/Training & Events Team Lead – Charlotte Rowe:

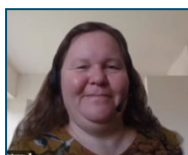


The PA/OM team provide expertise to users in the system functionality and processes of the PA/OM modules and have responsibility for managing all PA/OM master data changes and PA/OM data uploads in addition to change requests arising from Help Desk Calls, Circulars and Legislative changes. Operationally, PA and OM are closely integrated which allows for powerful reporting, either high level or detailed to provide general HR data, employee or staffing reports, headcount and census information etc.

The Training and Events Module in SAP is used to record and maintain a record of all training that an Employee attends.

eHealth & Disruptive Technologies

SAP Centre of Excellence—Business Support Team



Time Management Lead – Sarah Feheny

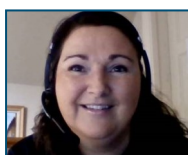
The Time Management team provide expertise in the system functionality and processes of the Time Management Module of the SAP HR & Payroll system. The Time Management team also implement HR master data changes and break fixes. They provide subject matter expertise to both the business users and corporate entities and also analyse and resolve user issues as assigned by the Helpdesk delivering a quality service to the SAP HR/Payroll user base.

Configuration of master data for Time Manager's Workplace is a major part of the Time Management team's workload.

On average 80 Work Schedule Rules are configured weekly. The Time Management team also work closely with the New Developments team configuring time master data for any new projects being implemented.

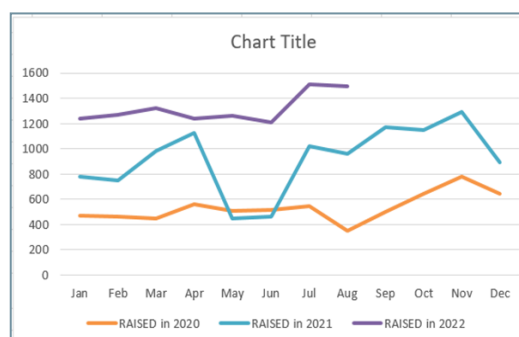
Numbers of time master data types currently set up on SAP HR:

MASTER DATA TYPE	Numbers of records available on SAP
Daily Work Schedules (DWS)	15,515
Weekly Work Schedule Rules (WSR)	63,559



Help Desk Team Lead - Linda Golden

The SAP CoE Helpdesk provide the first line support for the SAP HR & Payroll system user base and are the first point of contact for all SAP HR & Payroll users. The SAP CoE Helpdesk team are responsible for monitoring, managing and dispatching all BD (Business Desk) calls that are logged on SAP CoE Weblog (call logging system). The Helpdesk team are responsible for initial investigation of BD calls logged with SAP CoE and will resolve SAP HR & Payroll system issues where applicable at 1st level support. Currently only users with SAP HR & Payroll access/profile have permission to log a call on Weblog. There is a **330%** rise in the level of Business Desk Calls received over the 2 year period from August 2020 to August 2022 due to the addition of business support for the East and South East (see graph above).



Photos of the

Business Support Team:

Top Row—LtoR:

Mary Teresa Scanlon, Kathleen Walsh, Mairead Lyons, Alan Moody, Paulette Fitzpatrick.

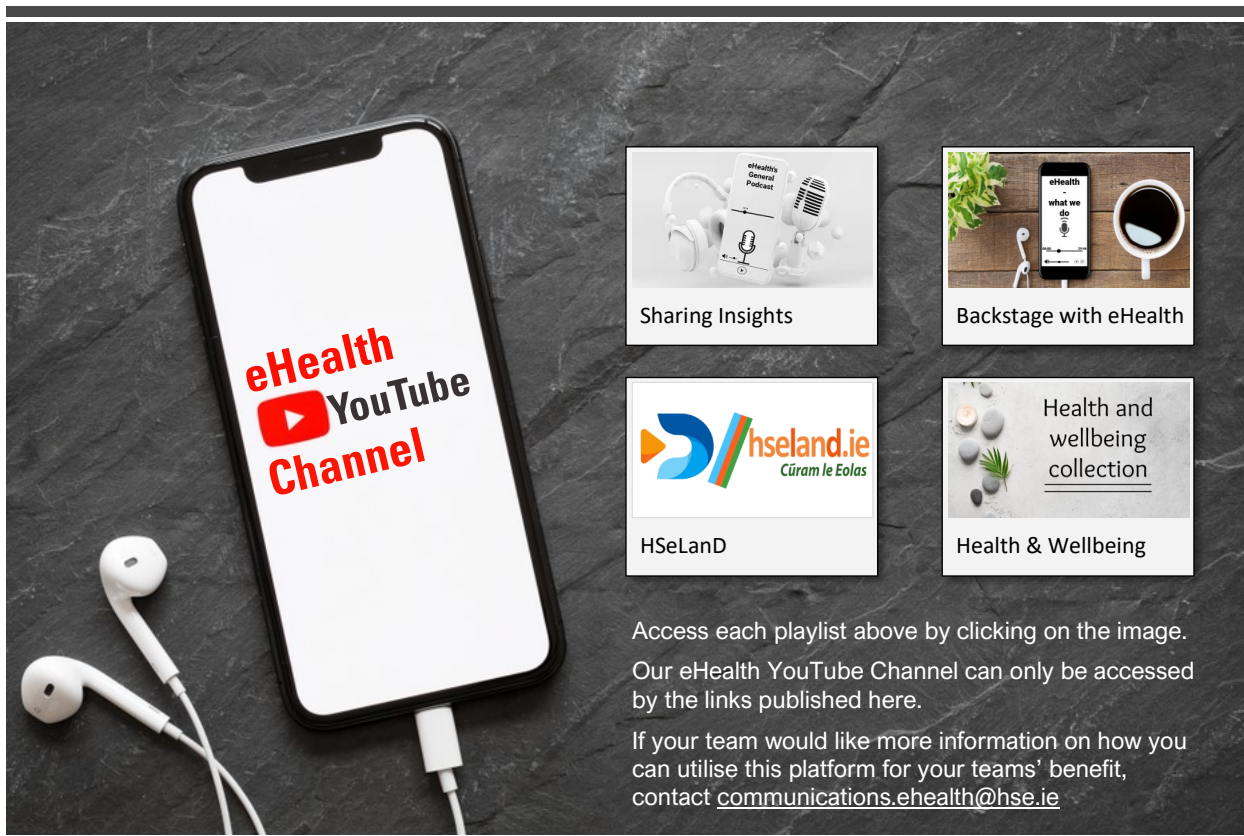
Second Row—LtoR:

Mary Delaney, Aisling Bonar, Sean Carleton, Colette Charles, Sandra Cullen,.

Bottom Row—LtoR:

Claire Keating, Geraldine McLoughlin, Angela Kelleher, Martin Clancy, Tracey Garvey.





eHealth YouTube Channel

Sharing Insights

Backstage with eHealth

HSeLand

Health & Wellbeing

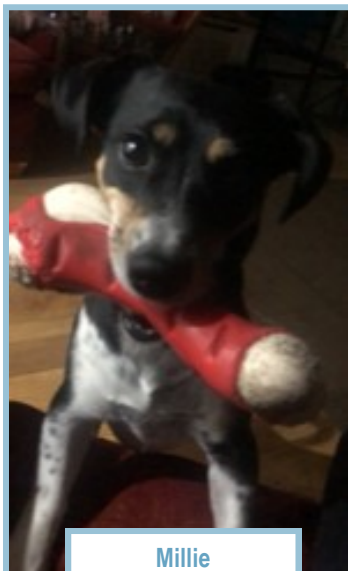
Access each playlist above by clicking on the image.

Our eHealth YouTube Channel can only be accessed by the links published here.

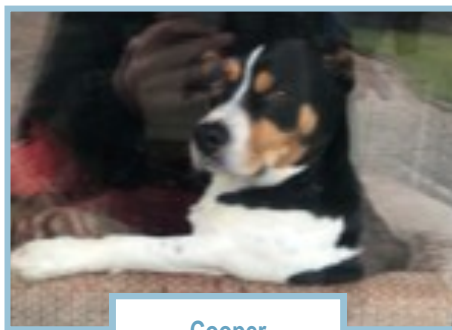
If your team would like more information on how you can utilise this platform for your teams' benefit, contact communications.ehealth@hse.ie

Millie and Cooper!

This month's favourite pets are Millie and Cooper and they live with Tadhg Pentony. Millie is 3 years old and she's a cross between a Jack Russel



Millie



Cooper

and a Dachshund. She enjoys sleeping and eating but doesn't come when she's called.

Cooper, pictured above looking like the Lord of the Manor is six years old. He loves walks but hates the car. His favourite person is Tadhg's mum and is like her shadow following her everywhere. He loves barking at every dog that walks by the front garden.



Recruitment:
eHealth.recruitment@hse.ie
eHealth.hr@hse.ie

Employee Relations
Employeerelations.ehealth@hse.ie

Training & Development
eHealth.training@hse.ie

Mobile Telephony
Mobile.queries@hse.ie
Mobile.ne@hse.ie

Finance
Finance:
infrastructure.orders@hse.ie

Capital:
revenue.po@hse.ie

Executive Support:
DSHmgt.Support@hse.ie

New Staff:
NewStaffIT.ehealth@hse.ie

Communications
Communications.ehealth@hse.ie

11



HALLOWEEN

There are multiple events happening across the country to celebrate the scariest night of the year, with spooks to suit all ages.

If you're looking for a truly terrifying experience consider Ireland's biggest Halloween event Farmophobia in County Meath- but be warned this is not for the faint hearted!

Lighter events include Hurloween at Croke Park, pumpkin patch and witches village at Ballycross Farm County Wexford, Halloween storytelling at the Newry and Mourne Museum, and the Púca Party in Siamsa Tíre Tralee.



Some of the biggest names in Irish and international comedy will be taking to the stage in Galway City from the 25th to the 31st of October. The 7 day lineup features acts such as Tommy Tiernan, Deirdre O'Kane, Dylan Moran and Ardal O'Hanlon to name a few.

For laughter guaranteed this bank holiday check out [The Galway Comedy Festival](#) for more information and tickets.

The famous festival returns for its 44th year, taking place over the **October Bank Holiday** weekend from the 28-31. This year's line-up features some of the biggest names in jazz gracing the stage, as well as a variety of vibrant events taking place throughout the city, such as art exhibitions and the open top jazz bus.

All information [here](#)



Bram Stoker Festival

Brought To Life By

Bram Stoker Festival celebrates the spooky life and work of the Dublin born 'Dracula' author, running from Friday 29th to Monday 31st October.

'Stokerland' fun park will be filled with deadly adventures for little monsters; world-class street performers alongside Victorian-inspired rides, lawn games, free face-painting and a packed programme of performances. 'Borealis', a mesmerising installation of light and sound, will bring the experience of the northern lights to Dublin Castle's Upper Courtyard every night during Bram Stoker Festival 2022.

Other activities include film screenings, walking history tours and a gallery visit from two of Dublin's scariest vampires. Most events are free or low cost, for more information visit <https://www.bramstokerfestival.com>

Introducing our new colleagues to the eHealth Community



Glen Carroll

Senior ICT
Project Officer

What fictional place would you most like to visit?

The fictional place I would most like to visit would be Gotham City!.

If you could trade places with one person for a day, who would you choose and why?

If I could trade places with someone for one day, it would be with one of the band members from oasis because it would have been some craic I'd say!

What is the top destination on your must visit list?

The place I would most like to visit is Vietnam

If you had to pick an age to be permanently for the rest of your life, which would it be?

The age I would like to be for the rest of my life is 28.



Oliver Morris

Business Analyst

What fictional place would you most like to visit?

Shermer High School.

If you could trade places with one person for a day, who would you choose and why?

Georg Cantor to understand the infinite.

What is the top destination on your must visit list?

Beehive huts on Skellig Michael.

If you had to pick an age to be permanently for the rest of your life, which would it be?

40

Introducing our new colleagues to the eHealth Community



Zainab AlAtraqchi
Senior ICT Project
Officer

What fictional place would you most like to visit?

Neverland.

If you could trade places with one person for a day, who would you choose and why?

My teenage Son to be able to understand him, as he always replies to me “Mom you don’t understand…”! ☺

What is the top destination on your must visit list?

Cairo, Egypt.

If you had to pick an age to be permanently for the rest of your life, which would it be?

8 or 9 years of age.



Jason Cooney
Second Level IT
Support Analyst

If you could trade places with one person for a day, who would you choose and why?

David Attenborough, the man has lived an amazing life, seen the best and the worst of mankind, but most of all he has seen things some of us will never get to see or even imagine.

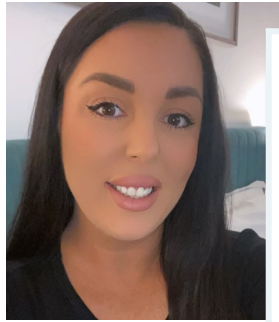
What is the top destination on your must visit list?

Machu Picchu in Southern Peru.

If you had to pick an age to be permanently for the rest of your life, which would it be?

Between 40 – 45, I think this is the sweet spot.

Introducing our new colleagues to the eHealth Community



Niamh Cummins

Project Officer

What fictional place would you most like to visit?

Hogwarts.

If you could trade places with one person for a day, who would you choose and why?

My dad on the day he represented Ireland in the Eurovision. I would love to know how he felt before, during and after his performance ☺

What is the top destination on your must visit list?

Tokyo.

If you had to pick an age to be permanently for the rest of your life, which would it be?

30. Still young enough, but with a bit of life experience ☺



Rashmi Singh

Relationship Manager

What fictional place would you most like to visit?

Central Perk from F.R.I.E.N.D.S ☺

If you could trade places with one person for a day, who would you choose and why?

I would say it would be me in my childhood, because childhood is always precious which we don't realise when we are living it, even for one day I would really love to see myself as a kid and living that beautiful day.

What is the top destination on your must visit list?

Niagara Falls, Canada.

Introducing our new colleagues to the eHealth Community



Tim Moran

Grade IV
Enterprise Architecture

What fictional place would you most like to visit?
Springfield.

If you could trade places with one person for a day, who would you choose and why?
Jeff Bezos so I could transfer his money into my bank account!

What is the top destination on your must visit list?
Las Vegas

If you had to pick an age to be permanently for the rest of your life, which would it be?
21—it was the calm before the storm!



Georgina McKenna

Team & Project
Support, working with
SCS—CMS

What fictional place would you most like to visit?
I have just started watching House of Dragons – So any of the locations from that or Game of Thrones – except for the wall as it would be far too cold!

If you could trade places with one person for a day, who would you choose and why?
Marilyn Monroe (early 60s) to see what was really going on back then.

What is the top destination on your must visit list?
New Orleans

If you had to pick an age to be permanently for the rest of your life, which would it be?
Probably the age I am now, I am very lucky everyone in my life is fit and healthy, my children are all at great ages so it would be great to stay just like this.

Introducing our new colleagues to the eHealth Community



Clive Halpin
Second Level IT
Support Analyst

What fictional place would you most like to visit?

Qo'nos

If you could trade places with one person for a day, who would you choose and why?

Rick Sanchez, why not!

What is the top destination on your must visit list?

Antarctica.

If you had to pick an age to be permanently for the rest of your life, which would it be?

25.



Natasha Hughes
Senior Project Manager
A2i-HIDs

What fictional place would you most like to visit?

Hogwarts

If you could trade places with one person for a day, who would you choose and why?

Kate Middleton. I find her very inspiring. She is a busy Mum of 3, lives a life of public service, champions early years development (which I think is so important) and is compassionate, elegant and graceful.

What is the top destination on your must visit list?

California.

If you had to pick an age to be permanently for the rest of your life, which would it be?

17 and starting out in NUIG.

Introducing our new colleagues to the eHealth Community



Daniel O'Leary
ICT Technology

What fictional place would you most like to visit?

Love the sea and everything about it - so it would have to be Atlantis.

If you could trade places with one person for a day, who would you choose and why?

Would love to see how a number of famous people lived but would be found out pretty fast so will stay a bit closer to home. Would love to see how my dad lived when he was youngster - did he really walk to school with no shoes - or if older, what was his experience of life in the UK when he went over in the early 60's, he says he was a pioneer but was he!

What is the top destination on your must visit list?

Want to see Everest someday, so it would have to be the Everest Base camp trek, before my knees go.. nice to have a few Dreams.

If you had to pick an age to be permanently for the rest of your life, which would it be?

Around 25—no real commitments, life was just a big old adventure!



If you would like to contribute an article on your team and the work they do, or if you have something you think may be of interest to our eHealth staff, please get in touch at:
Communications.ehealth@hse.ie