

Guidance on a data quality framework for health and social care in Ireland

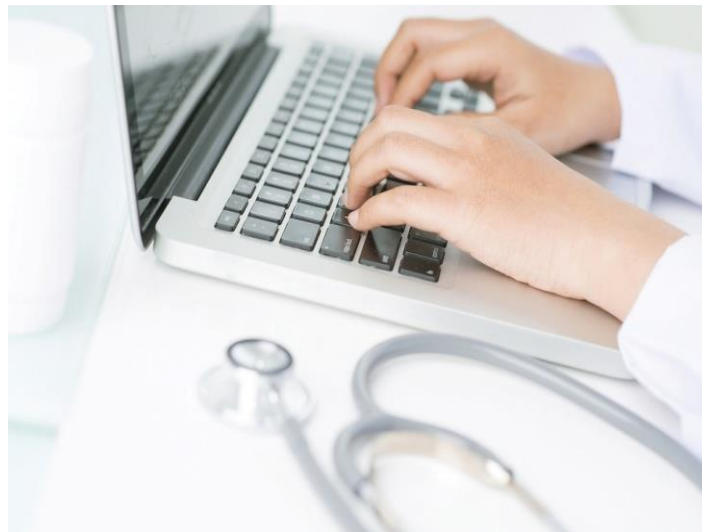
**CCIO annual meeting
29 May 2019**

Dr Barbara Foley
Health Information Manager, HIQA



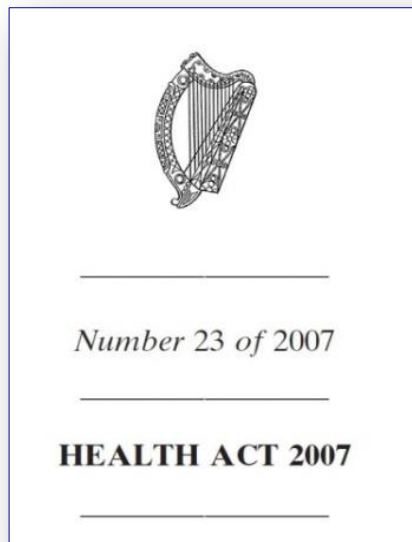
Presentation Outline

- Background – HIQA remit and work programme
- National data collections
- Development of Guidance on a data quality framework



Health information remit - Health Act 2007

HIQA has responsibility for setting standards for all aspects of health information and assessing compliance with those standards



Complex health information landscape



National Cancer Screening Service

Hospital In-Patient Enquiry Scheme (HIPE)

The National Cancer Registry Ireland
Incidence, Mortality, Treatment and Survival



National Perinatal Reporting System (NPRS)



Sláintecare - Need for quality data and information



10.2 Data, Research and Evaluation

In the future, a strong approach to data collection, analysis and management will underpin the delivery of our health and social care services.

Our priorities are to:

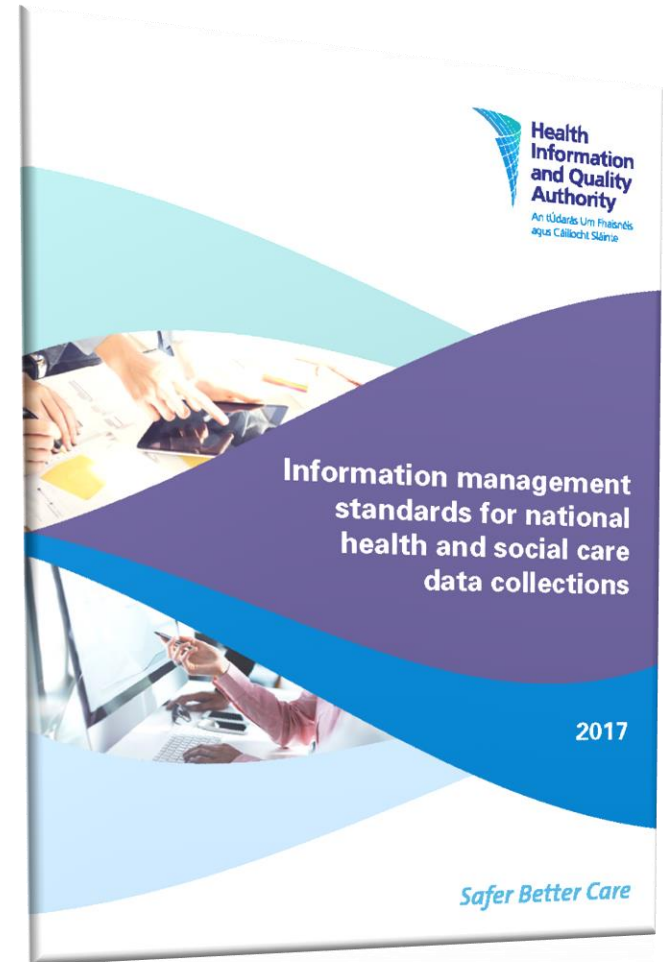
- Publish a health information policy framework;
- Consolidate and invest in data and R&D infrastructures and capabilities;
- Establish an R&D forum in health and social care; and
- Design an evaluation programme for Sláintecare.

Successful implementation of the Sláintecare vision will require robust knowledge and information drawing on good quality, timely and relevant data sources, and a vibrant research and development and health analytics culture. Health information and research, and the infrastructure and skills required for their generation and exploitation, must become a national priority.

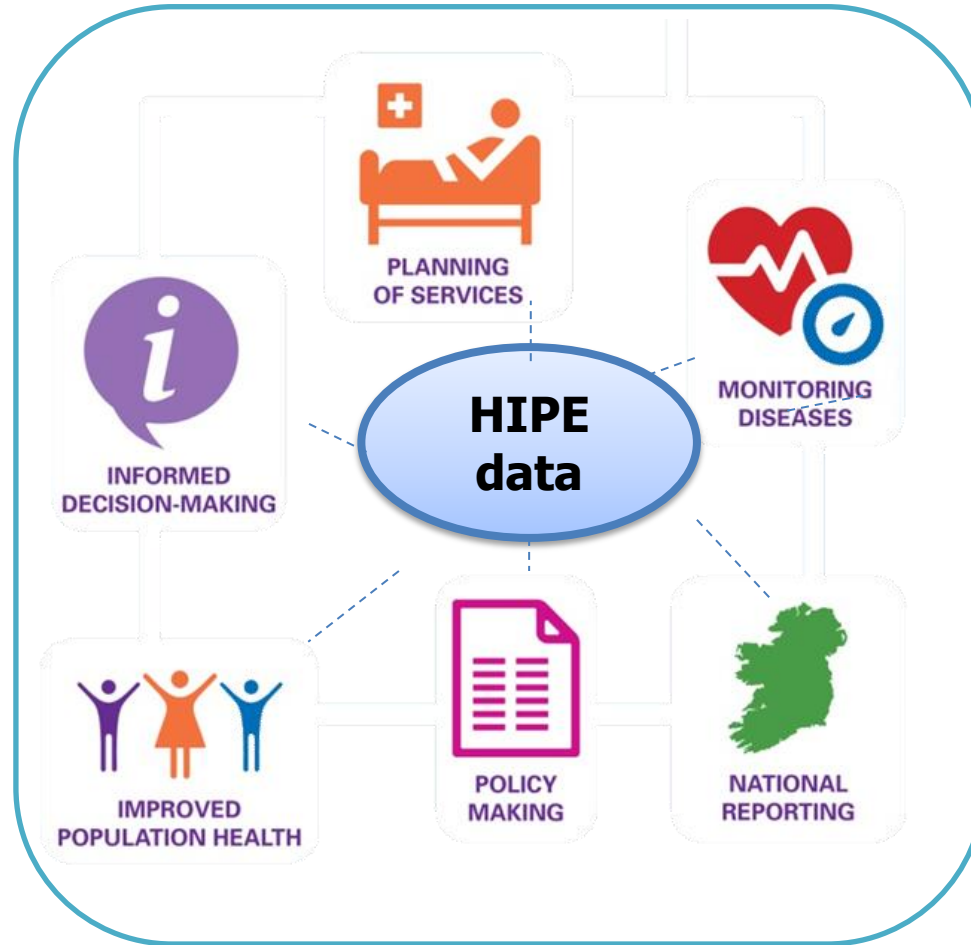
Reform, if it is to be effective and to address expectations, will require solid evidence. However, at present health information is often fragmented and not harnessed sufficiently. The roll out of the Individual Health Identifier and the opportunity to implement the eHealth strategy is now the right time to develop a new health information policy for Ireland that can meet legislative requirements, governance and operational arrangements needed to exploit and information in a modern health service.

Information Management Standards

- 'Managing organisation' of national health and social care data collections
 - e.g. HPSC – Computerised Infectious Disease Reporting System
- Provide a **framework of best practice** to enable national data collections collect quality data
- Work towards advancing improvements in national health information



Importance of high quality data - national data collections



National Standards for Safer Better Healthcare

June 2012

Standard 6

The managing organisation of the national health and social care data collection systematically assesses, monitors and improves the quality of the data it holds to ensure its objectives are met.

Features of a national health and social care data collection meeting this standard are likely to include the following:

- 6.1 An identified individual with responsibility for systematically assessing, monitoring and reviewing data quality to ensure data is accurate, complete, legible, relevant, reliable, timely and valid.
- 6.2 A data quality framework is in place that outlines the approaches to systematically monitoring, assessing, evaluating and improving the quality of data held in the national health and social care data collection. This may include the development of:

Five quality improvement tools for national data collections

March 2017

Safer Better Care

Safer Better Care

Review Programme – national data collections

1. Review programme to assess compliance with the information management standards



Phase 1

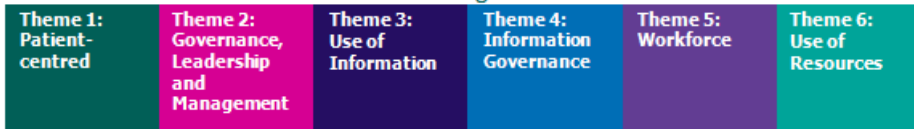
National data collections within the HSE.

Stages of the review

1. Eligible organisations complete and return a self-assessment tool. Based on prioritisation criteria, HIQA then conducts an in-depth review of each organisation.
2. Organisations are asked to submit a list of relevant documents for review.
3. The HIQA review team undertake on-site visits involving interviews with key members of staff and observations.
4. A report on compliance with the standards is published.
5. HIQA actively engages with staff in the national data collections to achieve compliance with the standards.



Themes included in the Information Management Standards



Q1 2018

Q2 2018

Q3 2018

Q1 2019

Q3 2019

BreastCheck

HIPE

PCRS

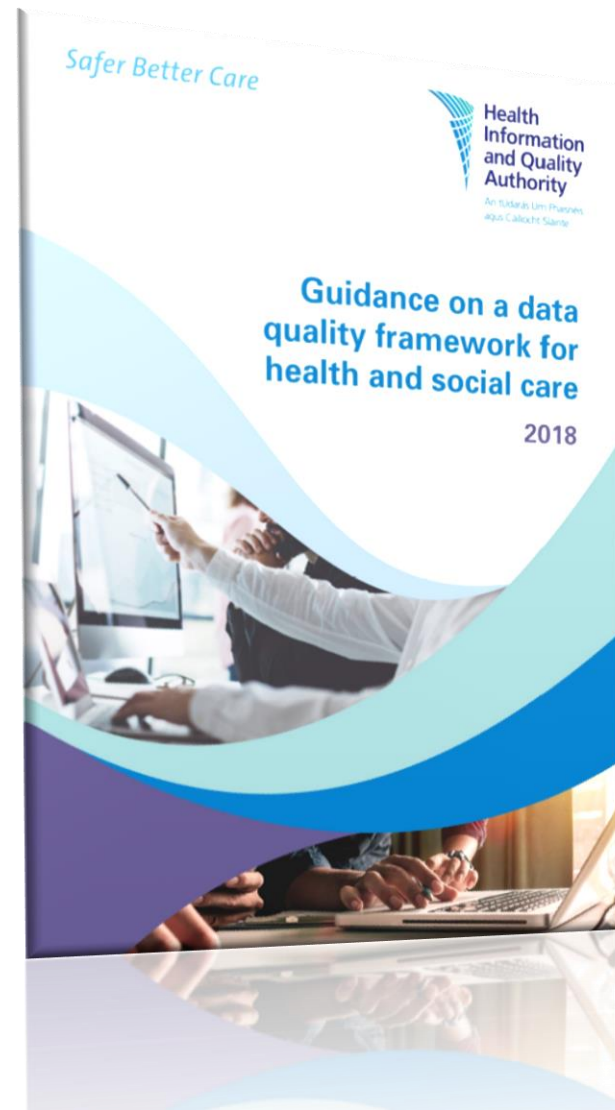
CIDR

Timeline for publication of reviews

Methodology for development of guidance



- Review of international evidence
- Expert Working Group
- Specialist international expert advice
- Targeted consultation.

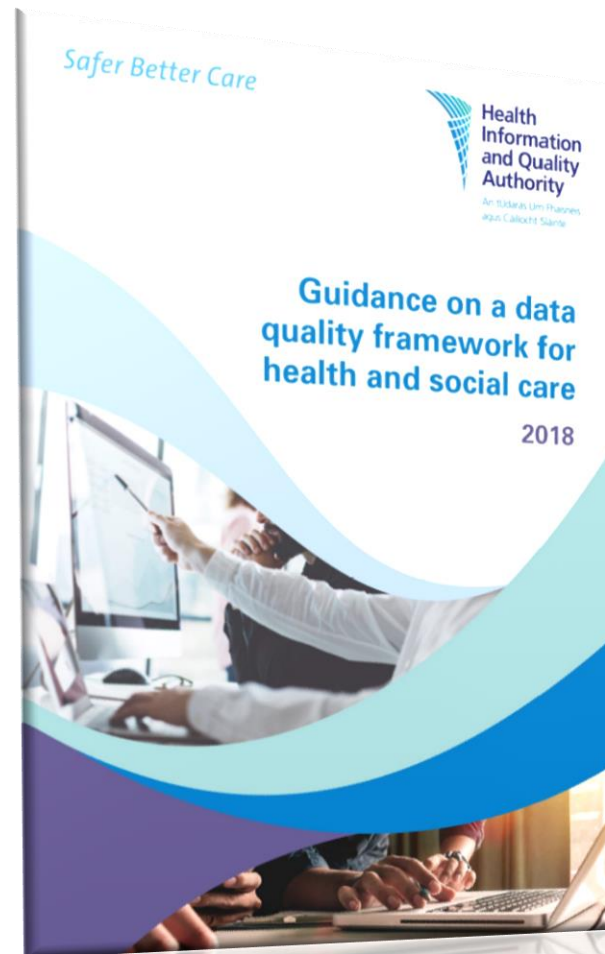


International dimensions of data quality

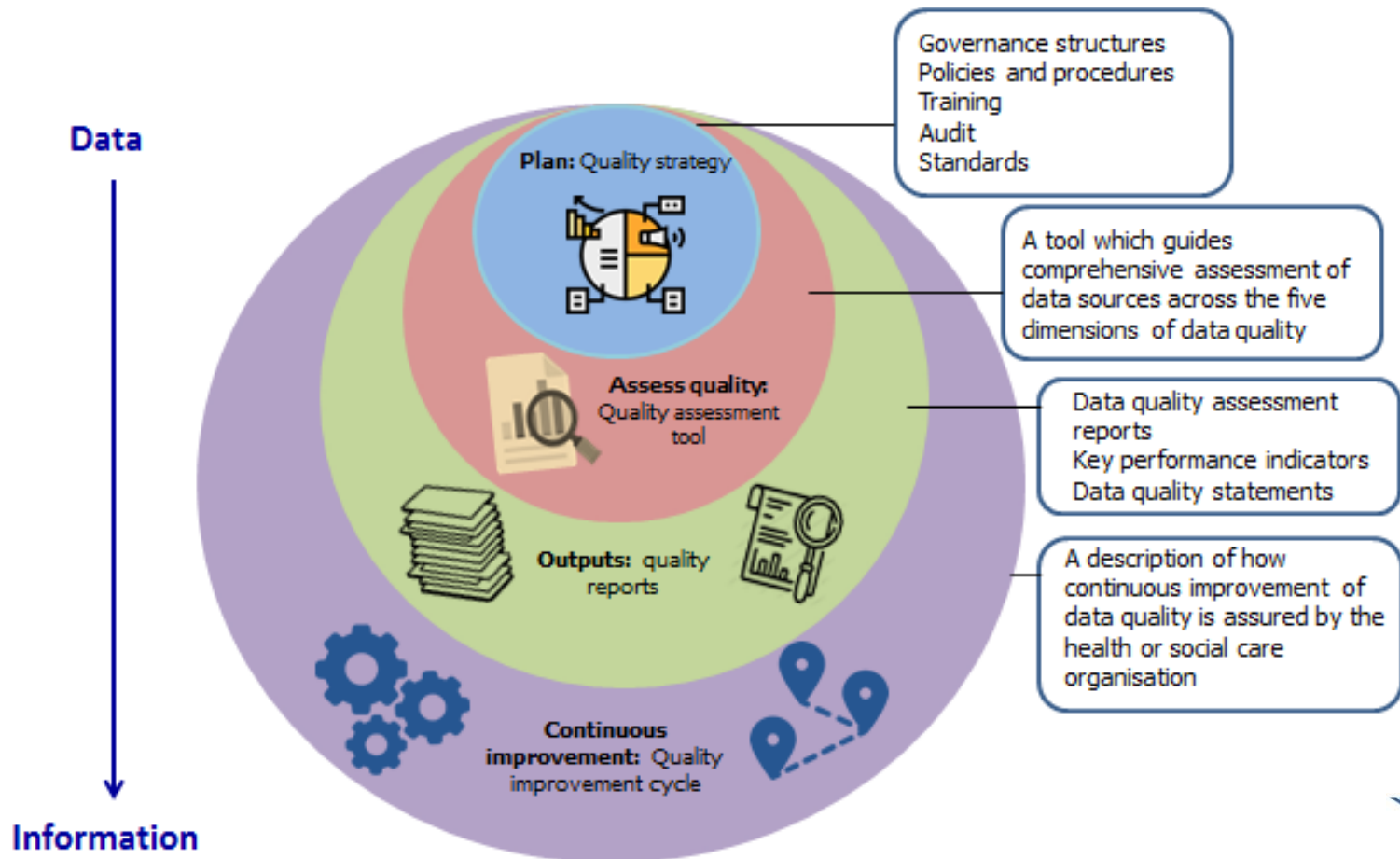


Animation – Data quality framework

https://www.youtube.com/watch?v=QqdF_AI7ivE&feature=youtu.be



Data Quality Framework for health and social care



Supporting material – Data Quality Assessment Tool

Table 3. Data quality

Characteristic	Assessment
Release and use of the data	Yes or no
	Yes, no, or partially
	Yes, no, or partially

1. Relevance

Relevance

- Relevant data meets the current and potential future needs of users.

Table 1. The quality characteristics of relevance

Characteristic	Description
Release and use of the data	This refers to the way in which an organisation's data is released and used. It concerns the frequency of use of that data. It should be noted that, where data is not used regularly, it may be due to reasons other than it not being useful, for example, difficulty for the user in accessing the data.
Value of the data	This refers to the extent to which the data successfully serves the needs of data users. If the data does not meet the needs of the data user, it can become irrelevant.
Adaptability of the data source	This refers to the extent to which the data is adaptable and flexible enough to meet the current and future needs of data users. If the data is not flexible in meeting the current and future needs of data users, it can become irrelevant.

In order to assess the quality of data in relation to relevance, the assessment tool outlined in Table 2 can be used.

Table 2. Data quality assessment tool – relevance

Relevance								
Characteristic	Criteria	Details						
Release and use of the data	Are regular assessments carried out to determine whether all of the data that is being collected is being used?	Undertake regular reviews of data usage, for example, assessment of usage metrics such as the number of times a data set was viewed, the number of times the data was downloaded and the number of times requests were received for access to the data.						
		<table border="1"> <thead> <tr> <th colspan="2">Assessment</th> </tr> </thead> <tbody> <tr> <td>Yes</td> <td><input type="radio"/></td> </tr> <tr> <td>No</td> <td><input type="radio"/></td> </tr> </tbody> </table>	Assessment		Yes	<input type="radio"/>	No	<input type="radio"/>
Assessment								
Yes	<input type="radio"/>							
No	<input type="radio"/>							

Further training materials



- eLearning training modules
- Guidance documents
- Data quality assessment tool
- www.hiqa.ie
- datacollections@hiqa.ie