

Enterprise Architecture Information Day

“Leading with Architecture”

Peter Connolly
Head of Enterprise Architecture
& Design Authority

16th January 2020

Evolution of Enterprise Architecture



Evolution of Enterprise Architecture

2015 1st OCIO Op Model

2016 K&I Strategy

2017/18 2nd OCIO Op Model

2019/20 3rd - Consolidated Op Model



Focus on new capabilities,
standardisation and assurance

Enterprise Architecture (Design Authority)

Rationale for this Function

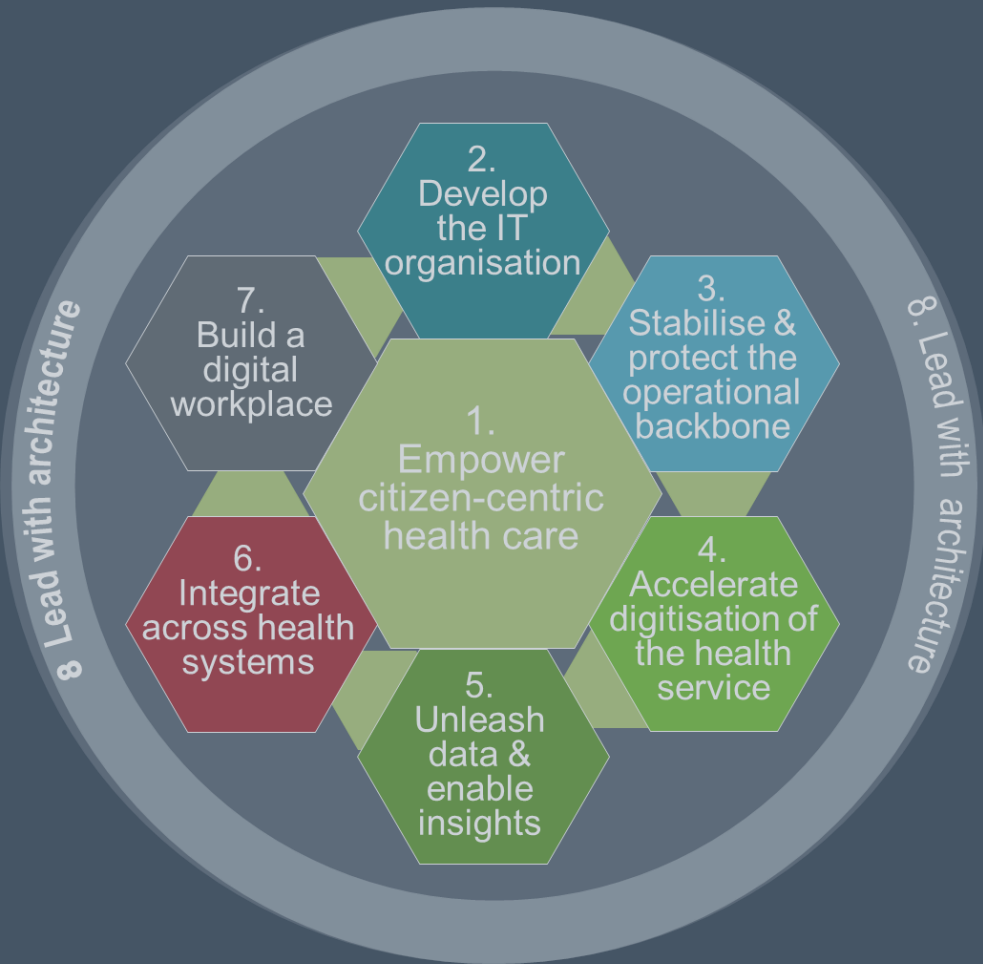
- Current way of organically delivering new solutions will not be fit for purpose in the future:
 - Does not support interoperability and data integration across solutions and business areas
 - Adds to complexity, total cost of ownership and dependency on wide range of vendors
 - Does not support strategic development of business and technology capabilities

Accountability & Services provided by this Function

- Ensures a centralised ownership of business processes and blueprints for all layers of enterprise architecture (applications, information, technical infrastructure, security)
- Ensures a coordinated, coherent approach to developing new business capabilities, and promotes re-use, integration, simplification and standardisation
- Facilitates accountabilities and services of the Design Authority at different levels
- Sets policy to govern information and technology security
- Provides alignment and direction on strategic solutions across all EA layers
- Drives continuous improvement in business processes, applications, integration and technology
- Provides standards to ensure effective interoperability across solutions
- Provides an enterprise wide view of business and technology architecture and support better decision making for new investments
- Supports and facilitates governance to assess and qualify project /change proposals for alignment with strategy and business capability requirements, and agreed standards
- Owns and continually enhances the enterprise data model
- Provides resources and expertise to engage directly with projects to design and deliver compliant solutions
- Facilitates research and innovation especially in relation to how new technology can enable better health care delivery
- Provides a pool of architect resources and continuity in their line management across projects

Goal 8: Lead with Architecture

To Advance Enterprise Architecture practice to improve customer focus and to extend architecture into programme delivery



- Deliver business engaged architecture
- Define key architecture skillsets, tools and methodologies
- Deliver foundational architecture principles, standards and assurance
- Establish business and application architecture as the basis for HSE transformation programmes
- Establish solution and domain architecture in all critical areas, platforms and products
- Establish data architecture and services to underpin interoperability

The EA Product Model

Solution Architecture

Provide solution architecture design and assurance for projects.



Business Optimisation

Work with healthcare providers & business units to deliver new business capabilities, improve process efficiencies, use healthcare information to drive business transformation

Data Specification & Interoperability

Drive data sharing and utilisation to enable and facilitate integrated patient care through the definition of data standards and specifications within the HSE.



Architecture Planning & Assurance

Develop architecture capabilities and an assurance framework to drive architecture good practice and coherence across the HSE.

Product Model focus

Product Lines	Description	Benefit Realisation
Solution Architecture	Provide solution architecture design and assurance for projects.	<ul style="list-style-type: none"> Better quality solutions Faster speed of deployment Improved design consistency & coherence.
Data Specification & Interoperability	Drive data sharing and utilisation to enable and facilitate integrated patient care through the definition of data standards and specifications within the HSE.	<ul style="list-style-type: none"> Better data quality & sharing capabilities Greater data reuse & utility Improved patient care.
Business Optimisation	Work with healthcare providers & business units to deliver new business capabilities, improve process efficiencies, use healthcare information to drive business transformation	<ul style="list-style-type: none"> Better collaboration with healthcare providers with good Business-IT Alignment. Improved Business agility. Better resource utilisation. Better informed & principled technology investment decisions.
Architecture Planning & Assurance	Develop architecture capabilities and an assurance framework to drive architecture good practice and coherence across the HSE.	<ul style="list-style-type: none"> Better consistency across IT services Improved standards & Regulatory compliance. Improved architectural quality through the Design Authority guidance and oversight.

Leading with Architecture –Current Focus

*To Advance Enterprise Architecture practice to improve customer focus
and to extend architecture into programme delivery*

1.



Better
Integration

2.

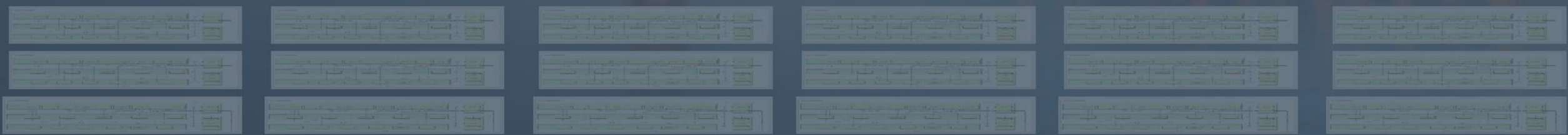


Architectural
Consistency

3.



Assurance &
Compliance



Enterprise Architecture

“What, When & How to engage with EA”

Chris Plunkett

Enterprise Architecture Delivery Manager

16th January 2020