



# Ecosystem

a member of the ECHAlliance International Ecosystem Network

**Fran Thompson, Interim Chief Information Officer, HSE**



An Roinn Sláinte  
Department of Health



# HSE Strategy; Implementation Insights

Fran Thompson – Director of Engagement and Delivery, Office of the CIO

 [Fran.Thompson@hse.ie](mailto:Fran.Thompson@hse.ie)  @frthompson

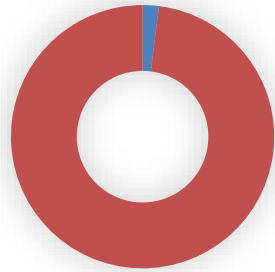
Delivering eHealth Ireland



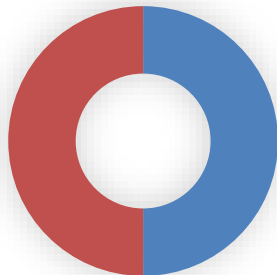
Office of the Chief Information Officer



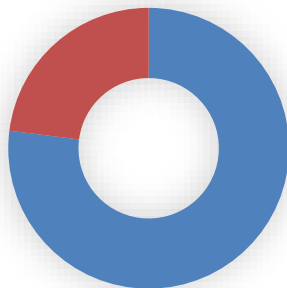
# Ireland's Health System.....



2% of the population



Use 50% of acute hospital  
and community  
prescribing resource



And 77% of bed days



# Current...



# Case for Change



Figure 2. The Fourth (missing) Aim is improved clinician experience.

## ■ Key Challenges

- Quality and Safety
- Better Outcome
- Access to Care
- Sharing of Health Information appropriately
- Capacity Constraints
- Clinician Experience
- Patient Experience
- Drive Lower Costs

# 2019 Priorities and Challenges

- Cyber Security
- National Children's Hospital
- MedLIS
- NIMIS
- ONE Programme
- Community Solutions
- National Rehab Hospital
- National Forensic Hospital
- Corporate Systems (IFMS and NiSRP)
- Integrated Information Service
- And .. Electronic Health Record



# Sláintecare Implementation Strategy

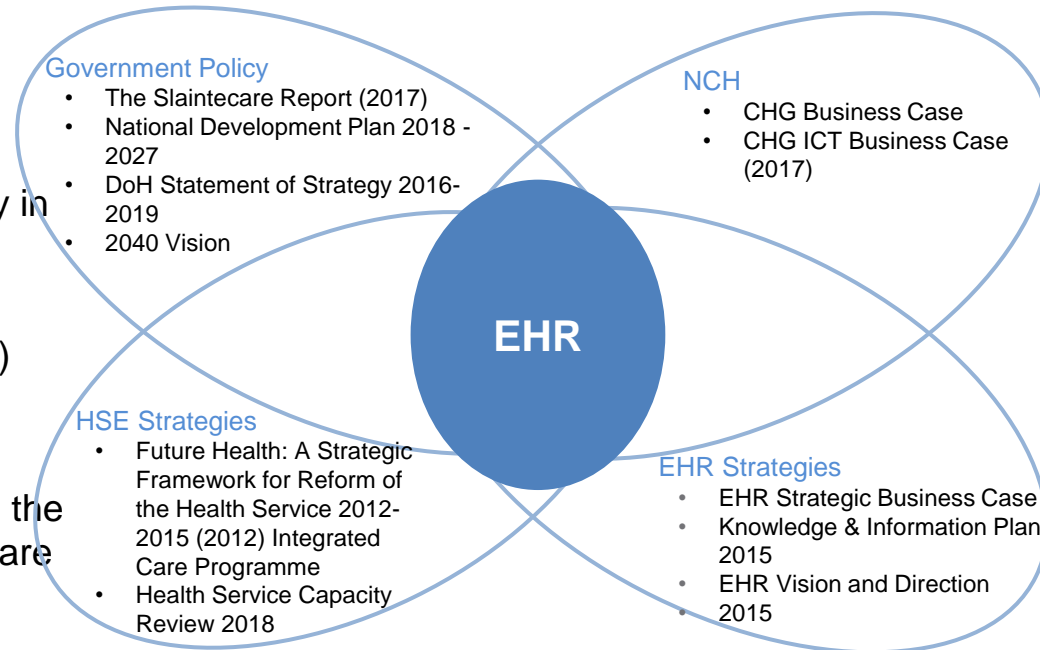
## Strategic Action 10; eHealth

- Implement the national acute **Electronic Health Record (EHR)**, starting with the new National Children's Hospital
- Design and roll out community-based Electronic Health Records, **connecting data across the system** and, over time, making data available to patients
- Design and roll out a range of **primary and community-based ICT services** that will improve the lives of patients, including ePrescribing, summary care records and commence implementing telehealth solutions to support care in the community
- Develop **new ICT systems** and invest in infrastructure to support the health workforce and the delivery of integrated care
- Implement the national **digital maternity system**
- Develop **information and research**, including evaluation of 10-year Sláintecare reforms

# Strategic Context for National EHR Programme

- Health System is in midst of a major reform phase. The catalyst was a series of reports starting with **Future Health: A Strategic Framework for Reform of the Health Service 2012-2015** (2012) which outlined a number of healthcare reforms.
- The **Slaintecare Report** (2017) highlights critical role integrated acute & community EHRs will play in transformation of Irish healthcare record system
- Strategic Business Case for National EHR (2016) aligns with these strategies and reform plans.
- The 3 Programmes of the National EHR will form the foundation for many of the planned revisions of care pathways and management structures.
- Acute EHR will support the delivery of these strategies. The Acute EHR will contribute to the national shared record and the overall vision for integrated care

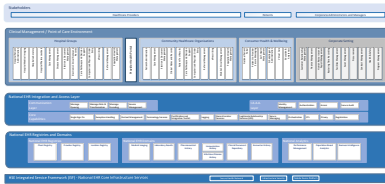
*Key strategic initiatives and policies that have shaped the Programme include:*



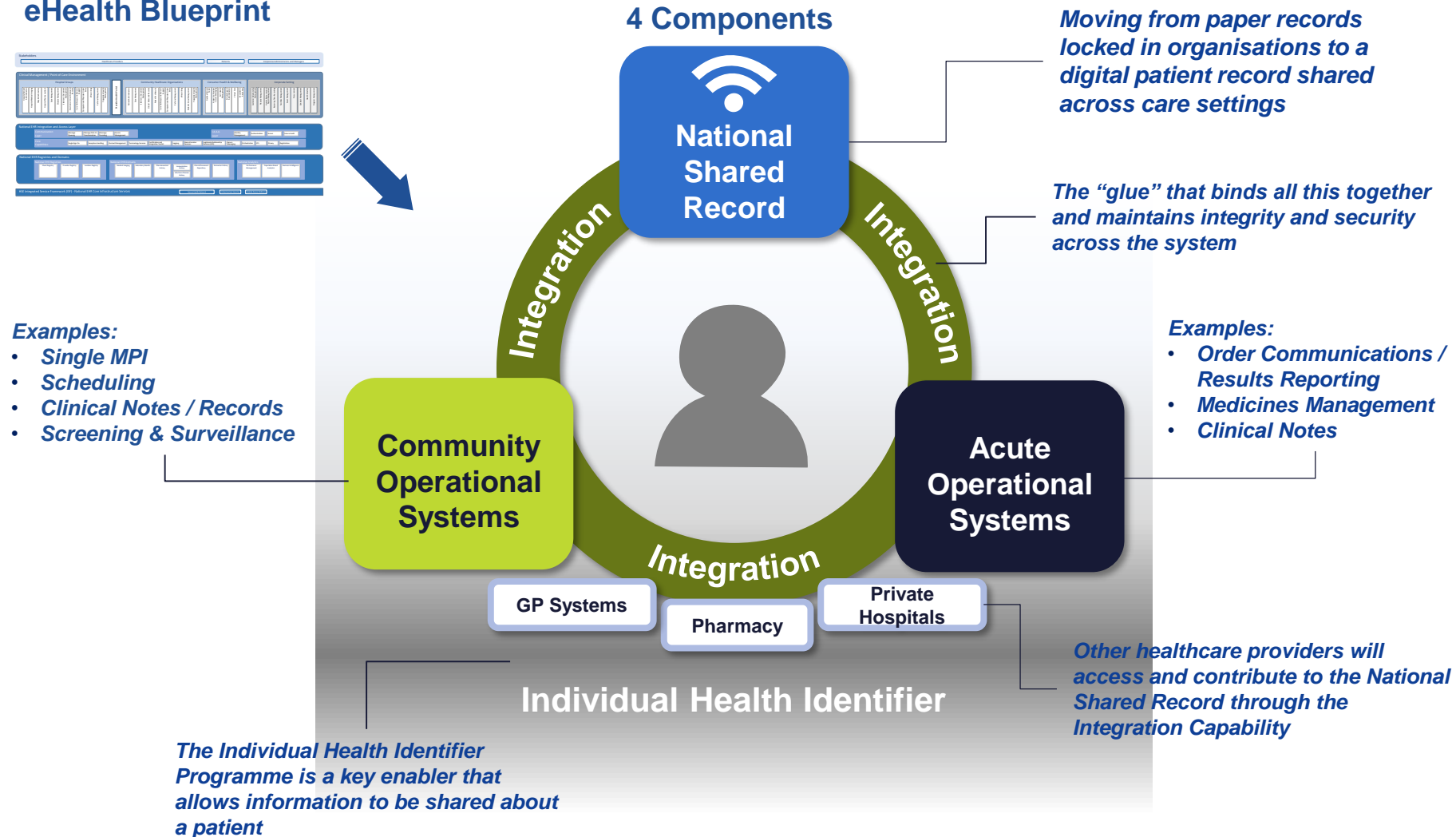


# What is the National Electronic Health Record?

## eHealth Blueprint



## 4 Components



# What is the National Electronic Health Record?



## 4 Programmes

- National Acute EHR
- National Community EHR
- Shared Record
- Integration Programme

# Strategic Context for National Acute EHR Programme

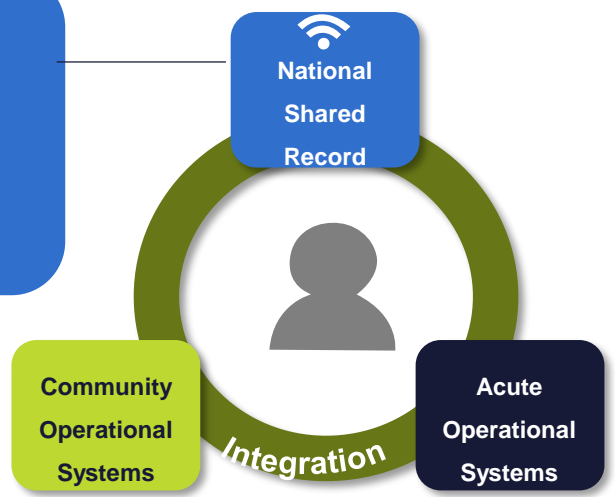


- Enablement of Integrated Care across the health system
- Acute EHR will support the vision of **Sláintecare Report**
- Enablement of the implementation of networks of Care across the acute Hospital system
- New Children's Hospital Opening
- National standardisation of Care pathways

# Acute Core Solutions of Record (ref: p32 / 33)

**NATIONAL SHARED RECORD**

- A national portal with key patient summary care data drawn from the operational solutions within the health service
- A longitudinal view of the patient's care
- Access to specific elements of records for different user groups



European EMR Adoption Model	
Stage	Cumulative Capabilities
Stage 7	Complete EMR; CCD transactions to share data; Data warehousing feeding outcomes reports, quality assurance, and business intelligence; Data continuity with ED, ambulatory, OP.
Stage 6	Physician documentation interaction with full CDSS (structured templates related to clinical protocols trigger variance & compliance alerts) and Closed loop medication administration.
Stage 5	Full complement of PACS displaces all film-based stages
Stage 4	CPOE in at least one clinical service area and/or for medication (i.e. e-Prescribing); may have Clinical Decision Support based on clinical protocols.
Stage 3	Nursing/clinical documentation (flow sheets); may have Clinical Decision Support for error checking during order entry and/or PACS available outside Radiology.
Stage 2	Clinical Data Repository (CDR) / Electronic Patient Record; may have Controlled Medical Vocabulary; Clinical Decision Support (CDS) for rudimentary conflict checking; Document imaging and health information exchange (HIE) capability.
Stage 1	Ancillaries – Lab, Radiology, Pharmacy – All installed OR processing LIS, RIS, PHIS data output online from external service providers.
Stage 0	All Three Ancillaries (LIS, RIS, PHIS) Not installed OR Not processing Lab, Radiology, Pharmacy data output online from external service providers.

**Childrens Hospital**

**Extended clinical departmental functionality to enable HIMMS Level 6 Implementation**

**ACUTE CORE**

- Patient Administration System (PAS)
- Order Communications
- Medications Management (ePrescribing, Medications Administration and Pharmacy)
- Clinical Notes and Records
- **External Diagnostic solutions (Lab, Rad)**



# Thank you

Fran Thompson – Director of Engagement and Delivery, Office of the CIO

[Fran.Thompson@hse.ie](mailto:Fran.Thompson@hse.ie)      @frthompson